

FOR LEASE

# ±13,000 SF – 15,839 SF Flex Warehouse Space

9545 Pathway Street | Santee, CA 92071



*The information contained herein has been given to us by the owner of the property or other sources we deem reliable. We have no reason to doubt its accuracy, but we do not guarantee it. All information should be verified prior to purchase or lease.*

**Contact**

**CAMERON CZUBERNAT**  
619.922.2192  
cameron@cpgsd.com  
CA Lic. 01383317

**KERRY SCHIMPF**  
619.920.0311  
Kerry@cpgsd.com  
CA Lic. 00955075

2295 Fletcher Parkway, Suite 200  
El Cajon, CA 92020  
www.cpgsd.com

**CPG** | **COMMERCIAL  
PROPERTIES  
GROUP**  
INTEGRITY - KNOWLEDGE - EXPERIENCE

# Property Highlights

Asking Price: \$1.49 PSF Gross



**Address:**

9545 Pathway Street  
Santee, CA 92071



**Power:**

1,200 Amps, 3 Phase Power (4 meters)



**±13,000 - 15,839 SF Flex Warehouse Space:**

High image office includes private offices, bullpen area, conference room, breakroom and restrooms



**Sprinklers:**

Fire Sprinklered



**Loading:**

2 grade level doors for the 13,000 SF option  
4 grade level doors for the 15,839 SF entire building option



**Gas:**

Gas to property



**Clear Height:**

±20' Ceiling Height



**Parking:**

31 parking spaces  
(Entire building parking available)

The information contained herein has been given to us by the owner of the property or other sources we deem reliable. We have no reason to doubt its accuracy, but we do not guarantee it. All information should be verified prior to purchase or lease.

**Contact**

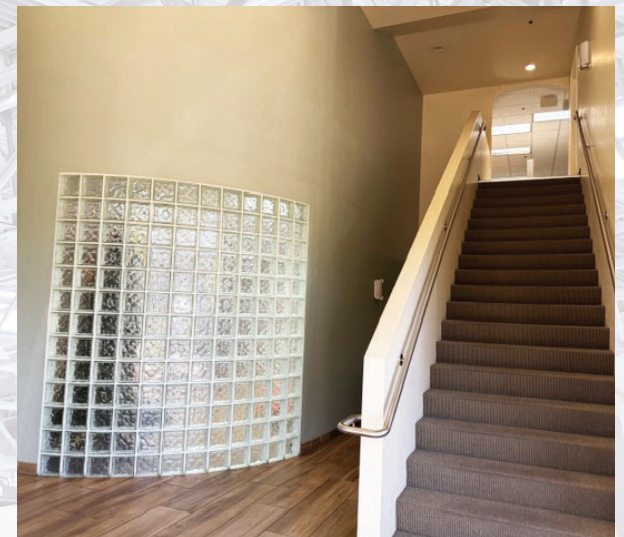
**CAMERON CZUBERNAT**  
619.922.2192  
cameron@cpgsd.com  
CA Lic. 01383317

**KERRY SCHIMPF**  
619.920.0311  
Kerry@cpgsd.com  
CA Lic. 00955075

2295 Fletcher Parkway, Suite 200  
El Cajon, CA 92020  
www.cpgsd.com

**CPG** | COMMERCIAL  
PROPERTIES  
GROUP  
INTEGRITY - KNOWLEDGE - EXPERIENCE

# Property Photos



The information contained herein has been given to us by the owner of the property or other sources we deem reliable. We have no reason to doubt its accuracy, but we do not guarantee it. All information should be verified prior to purchase or lease.

## Contact

**CAMERON CZUBERNAT**  
619.922.2192  
cameron@cpgsd.com  
CA Lic. 01383317

**KERRY SCHIMPF**  
619.920.0311  
Kerry@cpgsd.com  
CA Lic. 00955075

2295 Fletcher Parkway, Suite 200  
El Cajon, CA 92020  
www.cpgsd.com

**CPG** COMMERCIAL  
PROPERTIES  
GROUP  
INTEGRITY - KNOWLEDGE - EXPERIENCE



**Contact**

**CAMERON CZUBERNAT**  
619.922.2192  
cameron@cpgsd.com  
CA Lic. 01383317

**KERRY SCHIMPF**  
619.920.0311  
Kerry@cpgsd.com  
CA Lic. 00955075

2295 Fletcher Parkway, Suite 200  
El Cajon, CA 92020  
www.cpgsd.com

**CPG** | COMMERCIAL  
PROPERTIES  
GROUP  
INTEGRITY - KNOWLEDGE - EXPERIENCE