

FOR LEASE | 6,000 SF Industrial Suite

2 Months Free

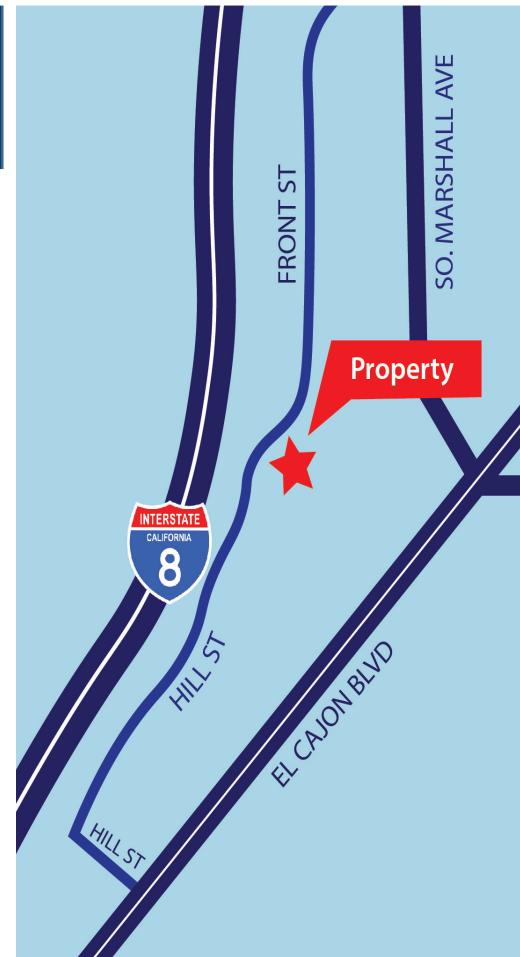


1400 Hill St, El Cajon 92020

Property Highlights

- New Renovations Completed: new paint & restrooms
- 3 private offices, 2 restrooms, office/bullpen area, reception and bonus mezzanine
- Fire sprinklers and skylights
- Paint booth
- 2 grade level doors; 12' x 14'
- Distributed power 200 amp - 3 phase
- City of El Cajon M Zone
- Close proximity to Fwy 8 and Hwy 125, and 67
- Asking Lease Rate: \$0.85 PSF Gross

The information contained herein has been given to us by the owner of the property or other sources we deem reliable. We have no reason to doubt its accuracy, but we do not guarantee it. All information should be verified prior to purchase or lease.



Cameron Czubernat
619.462.5100
cameron@cpgsd.com
CA Lic. 01383317

Kerry Schimpf
619.462.3100
kerry@cpgsd.com
CA Lic. 00955075

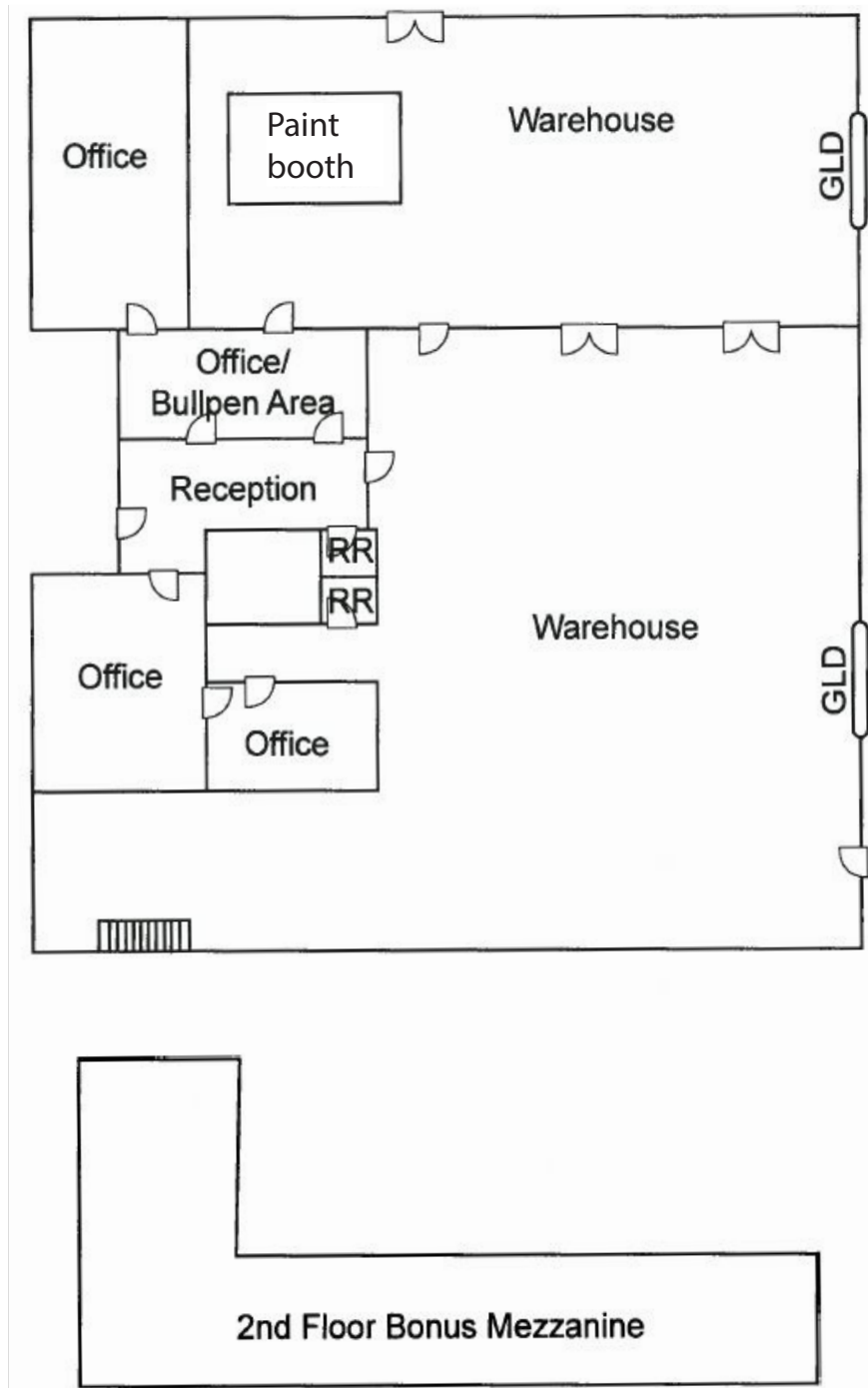
2295 Fletcher Parkway, Suite 200, El Cajon, CA 92020

CPG COMMERCIAL
PROPERTIES
GROUP
INTEGRITY - KNOWLEDGE - EXPERIENCE

www.cpgsd.com

FOR LEASE | 6,000 SF Industrial Suite

Floor Plan



The information contained herein has been given to us by the owner of the property or other sources we deem reliable. We have no reason to doubt its accuracy, but we do not guarantee it. All information should be verified prior to purchase or lease.

Cameron Czubernat
619.462.5100
cameron@cpgsd.com
CA Lic. 01383317

Kerry Schimpf
619.462.3100
kerry@cpgsd.com
CA Lic. 00955075

CPG | COMMERCIAL
PROPERTIES
GROUP
INTEGRITY - KNOWLEDGE - EXPERIENCE
www.cpgsd.com

2295 Fletcher Parkway, Suite 200, El Cajon, CA 92020

FOR LEASE | 6,000 SF Industrial Suite

Bulpen Area



Warehouse w/ bonus mezzanine



Paint Booth



Private office with built in cabinetry



The information contained herein has been given to us by the owner of the property or other sources we deem reliable. We have no reason to doubt its accuracy, but we do not guarantee it. All information should be verified prior to purchase or lease.

Cameron Czubernat
619.462.5100
cameron@cpgsd.com
CA Lic. 01383317

Kerry Schimpf
619.462.3100
kerry@cpgsd.com
CA Lic. 00955075

2295 Fletcher Parkway, Suite 200, El Cajon, CA 92020

CPG | COMMERCIAL
PROPERTIES
GROUP
INTEGRITY - KNOWLEDGE - EXPERIENCE
www.cpgsd.com