

Price Reduction

PROPERTY

KERRY SCHIMPF
619.462.3100
Kerry@cpgsd.com
CA Lic. 00955075

CAMERON CZUBERNAT
619.462.5100
cameron@cpgsd.com
CA Lic. 01383317

CPG | COMMERCIAL
PROPERTIES
GROUP
INTEGRITY - KNOWLEDGE - EXPERIENCE

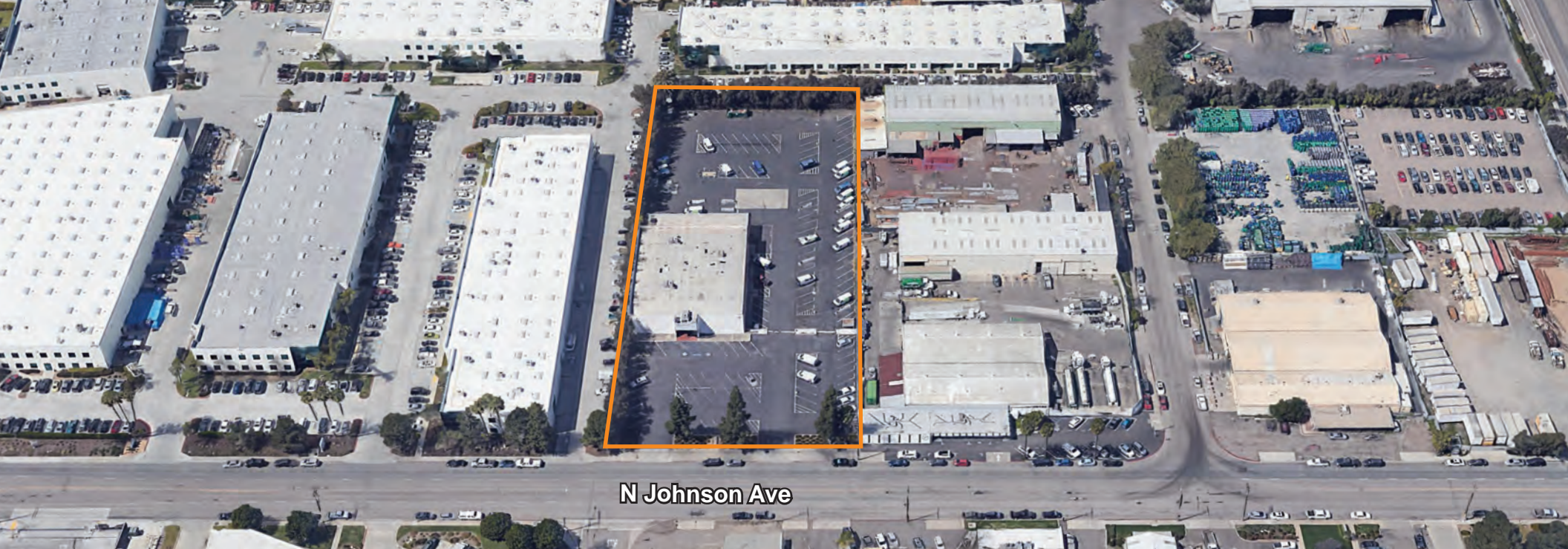
2295 Fletcher Parkway
Suite 200
El Cajon, CA 92020

www.cpgsd.com

FOR LEASE

2.2 Acres Fenced, Paved
and Secure Yard + 14,000
SF Building in East County

1406 N Johnson Avenue
El Cajon, CA 92020



N Johnson Ave



14,000 SF industrial building:
Concrete block construction,
fire sprinklers



Zoning: City of El Cajon "M" zone allows
for **Outside Storage** by right, heavy
manufacturing and wholesale distribution



15% Office area



18'-20' Clear height



Abundant yard space



Rent: \$25,000/Mo NNN Firm
Available Lease Term: 5-20 Years



Close proximity to Interstate,
8 Freeway, 52 Freeway and
67 Freeway

KERRY SCHIMPF
619.462.3100
Kerry@cpgsd.com
CA Lic. 00955075

CAMERON CZUBERNAT
619.462.5100
cameron@cpgsd.com
CA Lic. 01383317

CPG COMMERCIAL
PROPERTIES
GROUP
INTEGRITY - KNOWLEDGE - EXPERIENCE

2295 Fletcher Pakway, Suite 200
El Cajon, CA 92020

www.cpgsd.com



KERRY SCHIMPF
619.462.3100
Kerry@cpgsd.com
CA Lic. 00955075

CAMERON CZUBERNAT
619.462.5100
cameron@cpgsd.com
CA Lic. 01383317

CPG COMMERCIAL
PROPERTIES
GROUP
INTEGRITY - KNOWLEDGE - EXPERIENCE

2295 Fletcher Pakway, Suite 200
El Cajon, CA 92020

www.cpgsd.com